

VCLD120614A300RB

(1206, 14Vdc, 0.1J, 40A, 600pF, SnPb)

Multilayer Chip Varistor Datasheet

BASIC SPECIFICATION

| | |
|-----------------------|-----------------|
| Case Size [EIA] | 1206 |
| Operating Temperature | -55 to +125°C |
| Grade | General |
| Termination | SnPb |
| RoHS | No |
| MSL Level | 1 |
| Packaging | T&R 7in (180mm) |
| Packaging Qty | 4000 pcs |



Non
RoHS

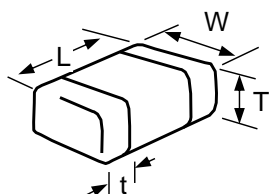


Click for
Online Data

ELECTRICAL CHARACTERISTICS

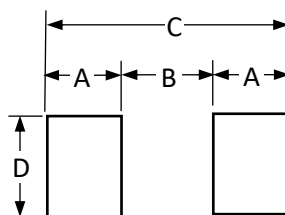
| | |
|---|-----------|
| DC Working Voltage | 14 Vdc |
| AC Working Voltage | 10 Vac |
| Breakdown Voltage [1mA DC] | 18.5±12 V |
| Clamping Voltage [8x20µs] | 32V @ 1A |
| Max Leakage Current [Vdc, 25°C] | 15 µA |
| Transient Energy [10x1000µs] | 0.1 J |
| Peak Power [10x1000µs] | 75 W |
| Peak Current Rating [8x20µs] | 40 A |
| Typical Capacitance [1kHz, 0.5Vrms, 25°C] | 600 pF |
| Capacitance Tolerance | +100/-50% |

DIMENSIONS



| | mm | inches |
|---|-----------|-------------|
| L | 3.20±0.20 | 0.126±0.008 |
| W | 1.60±0.20 | 0.063±0.008 |
| T | 1.02 max | 0.040 max |
| t | 0.94 max | 0.037 max |

SOLDERING PAD



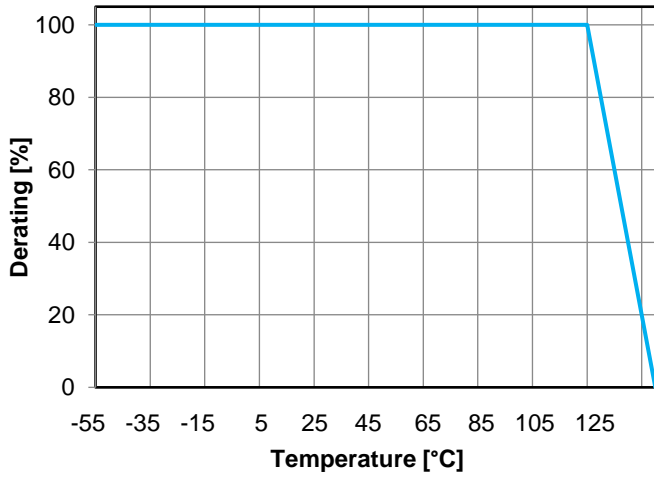
| | mm | inches |
|---|------|--------|
| A | 1.02 | 0.04 |
| B | 2.03 | 0.08 |
| C | 4.06 | 0.16 |
| D | 1.65 | 0.065 |

HOW TO ORDER

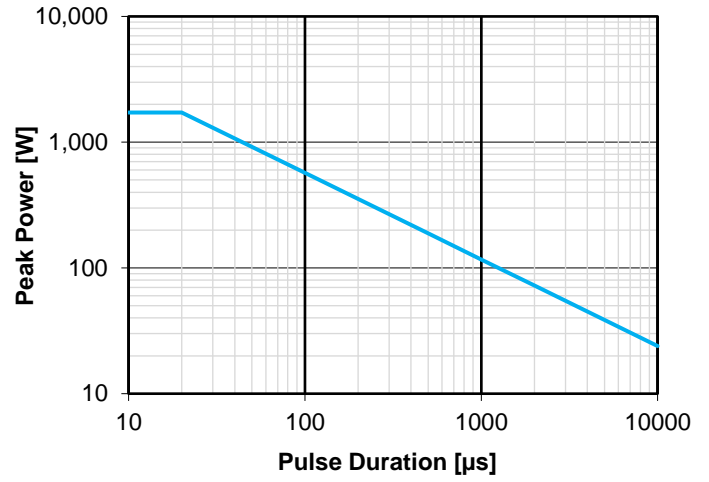
| | | | | | | |
|-----------------------|-------------|--------------------|------------------|---------------------|--|----------------------|
| VCLD | 1206 | 14 | A | 300 | R | B |
| Varistor Chip SnPb | Case Size | Working Voltage | Energy Rating | Clamping Voltage | Packaging | Termination |
| | | 14 = 14Vdc | A = 0.1J | 300 = 32V | D = 7" reel (1,000pcs) R = 7" reel (4,000pcs) T = 13" reel (10,000pcs) | B = SnPb (5% Pb min) |

TYPICAL CHARACTERISTICS

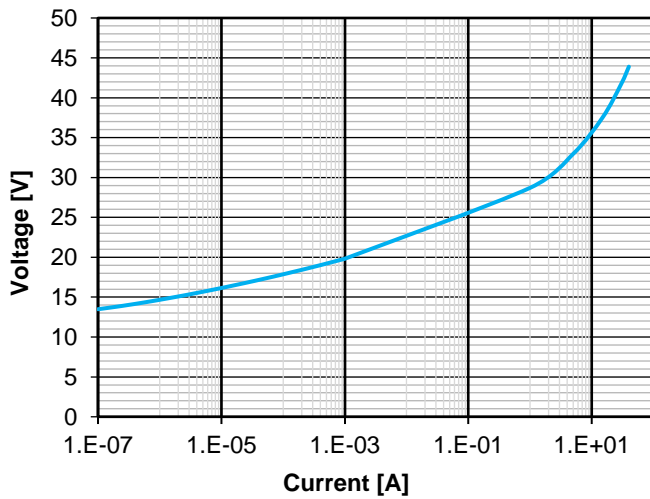
Temperature Derating (Energy, Current, Power)



Power Derating



Voltage / Current



S21

